

MASONRY 350 SMART



BRICK AND BLOCK SAW

TOGETHER **WE BUILD**



MASONRY 350 | Model # 1188975 | 115V/60Hz, 2 HP

THE BEST SOLUTION FOR CUTTING BRICKS, BLOCKS, PAVING STONES, OR TILE

The biggest cutting table available on a 14" masonry saw. The Masonry 350 delivers very accurate cuts up to 30" in length and 4 3/4" deep. The 2 HP motor provides the power required to cut through larger and longer pieces day in and day out.



2 HP, 115V high-torque motor

14" general purpose blade included

180° protractor included

Integrated stand with wheel kit

Single arm design allows for larger cuts

The cutting tray rolls back and forth on ceramic nylon rollers with sealed bearings

Includes wheelkit and a springloaded folding stand for easy transport

Technical specifications

MASONRY 350 SMART CUT

Blade diameter	14 in
Blade shaft diameter	1 in
Max. cutting length - includes plunge	26 (30 in)
Max. cutting depth	4-3/4 in
Motor	2 hp 115v, 15 amps
Cutting table dimensions	20 in x 16 in
Cutting surface height	33-1/2 in
Motor speed	2850 rpm
Weight* (boxed)	175 (215) lbs
Water pan capacity	10 gal
Water pump flow	3 gpm
Length* (boxed)	47 (48) in
Height* (boxed)	51 (55) in
Width* (boxed)	28-1/2 (29) in
● Replacement Blade - Continuous Rim	#1193924
● Replacement Blade - Abrasive Masonry	#1193934
● Replacement Blade - Concrete Turbo	#1193944
● Replacement Blade - Stone	#1193954

INNOVATION

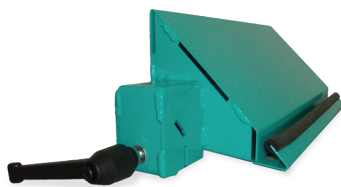
The blade guard is lined with sound absorbing material used in the boat building industry, and this greatly reduces noise from the blade. The blade guard may be removed with just two thumb screws – changing blades is fast and easy.



MITER CUT ACCESSORIES

If your work requires you to make 45 degree miter cuts, we have developed an accurate and easy-to-use miter for the Masonry 350 and Masonry 750 saws.

Masonry 350, Item # 1187640
Masonry 750, Item # 1188870



(* Operating Dimensions (boxed))